



Using Data-Driven Intelligence to Increase Your GC and GC-MS Productivity

Non-scheduled downtime and the replacement of consumables contributes to increased GC and GC-MS running costs and reduce system productivity. This infographic explores how you can avoid costly unscheduled downtime, maintain profitability, and meet compliance standards with the latest intelligent solutions for optimized GC and GC-MS operation.

Stop problems before they start

Intelligent instrument monitoring can help manage system health, reduce unscheduled downtime and maintain your GC and GC-MS productivity.

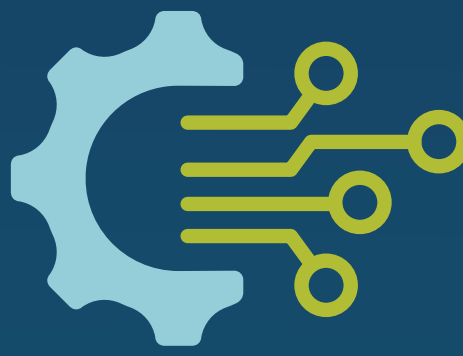


Optimize consumables usage

GC and GC-MS consumables, such as liners and septa, need replacing to ensure the instrument is performing at its best. Data-driven insights for consumable usage maximizes lifetime and reduces waste for greater sustainability.

Customize, automate and integrate

Customizable software solutions serve only the information you need, making it easy to oversee the automation and integration of your instrumentation.



Always opt for ease-of-use

Easy-to-use software and on-demand resources can make system errors easy to resolve without the need for a dedicated technician.

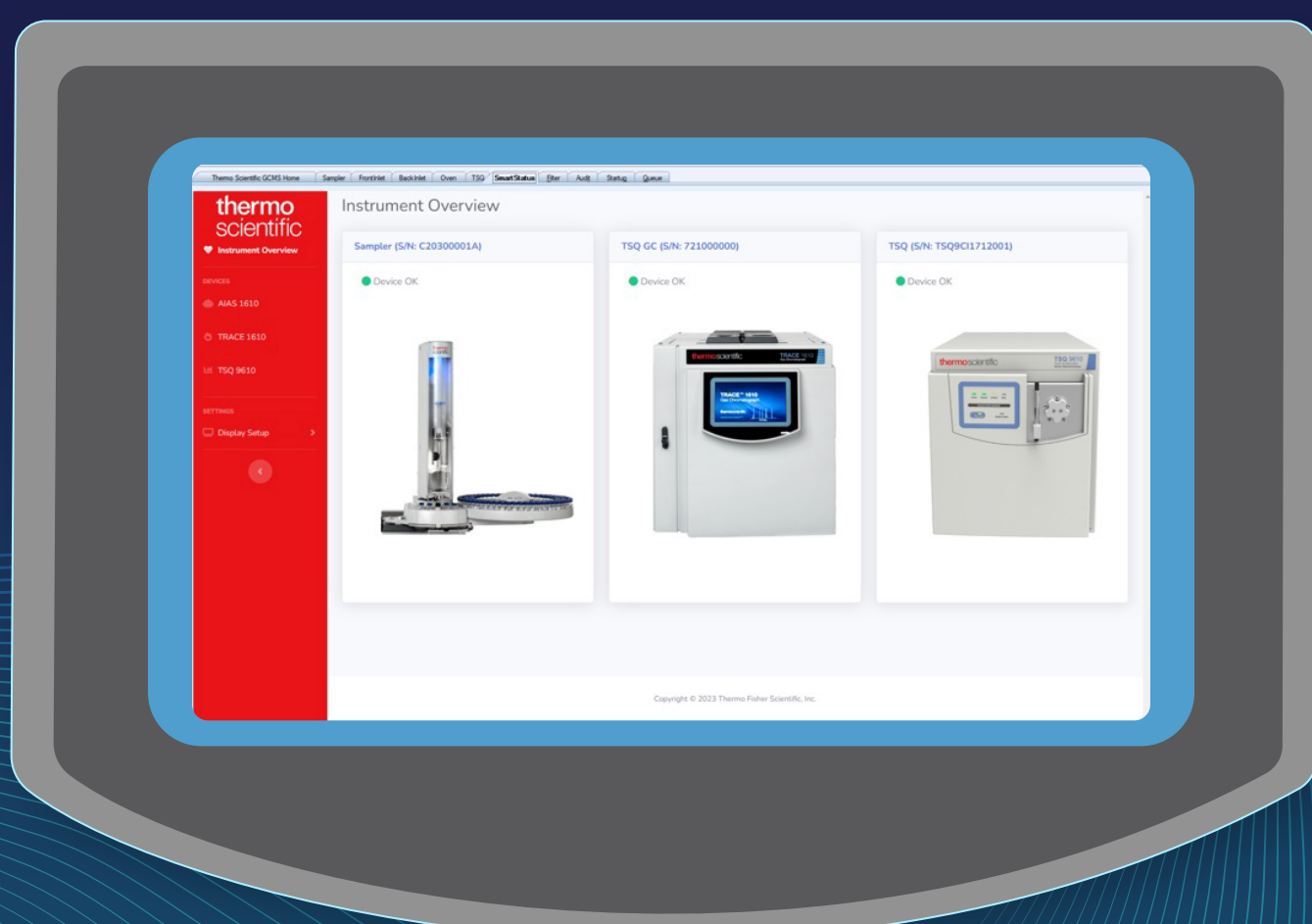
Maintain sensitivity to avoid costly re-runs

Focus on overall system health and consumable tracking to maintain GC and GC-MS sensitivity. This can support regulatory compliance and reduce the need for costly re-runs.



Ready to get SMART?

Thermo Scientific™ SmartStatus™ software optimizes GC and GC-MS workflows, preventing unscheduled downtime and reducing unnecessary running costs through maintenance alerts and consumable usage tracking.



The easy-to-use, intuitive interface makes **SmartStatus software** the ideal solution for expert and novice users alike.

Monitor entire system



Data-driven insights



Conduct preventative maintenance



Ready to run

